



Electrolux
PROFESSIONAL

Standard Preparation 1000 mm Solid Wall Shelf with Brackets

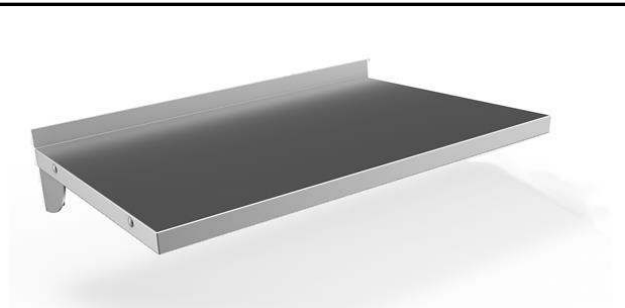
ITEM # _____

MODEL # _____

NAME # _____

SIS # _____

AIA # _____



132823 (WSS104N)

Solid Wall Shelf with
brackets, 1000mm

Short Form Specification

Item No. _____

Made from 304 AISI stainless steel, 1mm in thickness.
Upturned edges. Integral radiused rear upstand, h=30mm.
Wall brackets allow the shelf to be positioned at different heights.

Main Features

- Smooth surfaces, rounded corners, absence of edges and rear upstand facilitate cleaning operations.
- Sturdiness, stability and reliability of table accurately tested.

Construction

- Made entirely in 304 AISI stainless steel, 10/10 in thickness; with a Scotch Brite finish.
- Upturned edges, 50 mm high, to guarantee operator safety.
- Incorporates a rear upstand to avoid spillage between wall and shelf.
- 100 mm upstand with 10 mm radiused corner and 13 mm deep, designed to be used against a wall.

APPROVAL: _____



Experience the Excellence
www.electroluxprofessional.com



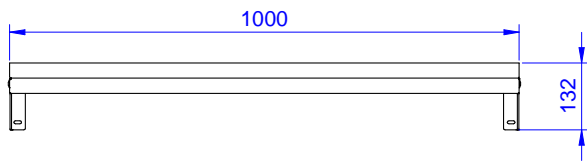
Electrolux
PROFESSIONAL

Standard Preparation 1000 mm Solid Wall Shelf with Brackets

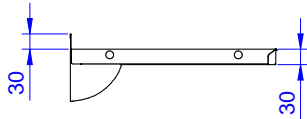
Key Information:

| | |
|------------------------------|---------|
| External dimensions, Width: | |
| 132823 (WSS104N) | 1000 mm |
| External dimensions, Depth: | 400 mm |
| External dimensions, Height: | 30 mm |
| Upstand Dimensions, Height: | 23 mm |
| Upstand Dimensions, Depth: | 2 mm |
| Upstand Dimensions, Radius: | R=10 |
| Net weight: | 2 kg |

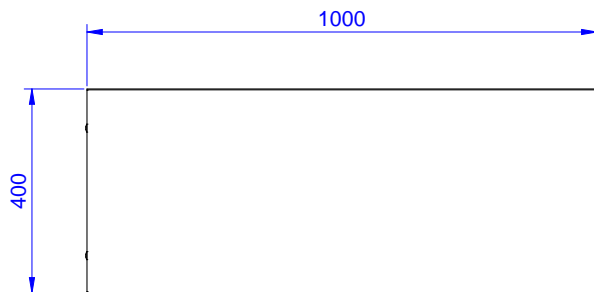
Front



Side



Top



Standard Preparation
1000 mm Solid Wall Shelf with Brackets

The company reserves the right to make modifications to the products
without prior notice. All information correct at time of printing.

2025.04.19